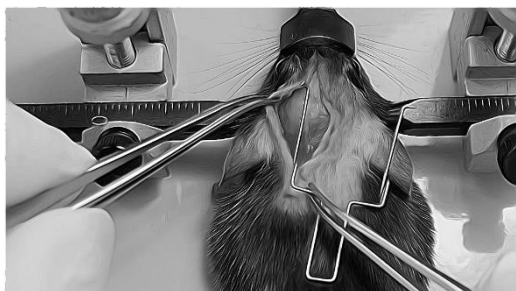


Step by Step Guide: Product No. 52179 Kane Retractor for Stereotaxic Surgery, Mouse

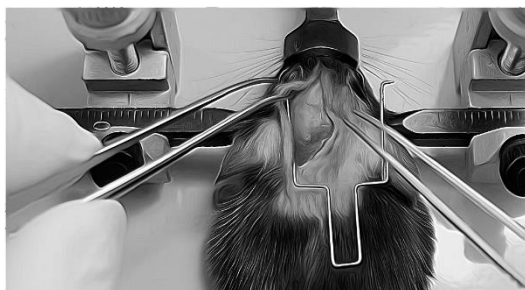
The illustrations below show how easy the retractor is to position on the mouse's scalp. By following these easy steps, the retractor offers a substantial area to work on the skull while maintaining asepsis. Prior to placement, a skin incision, ~12mm, is made on the midline of the scalp.



Step 1: Hold retractor with forceps by connector arm. Position retaining loop under skin. Skin will be held in place by elevation loop.



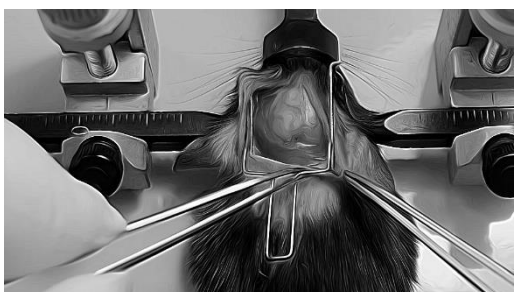
Step 4: Grasp straight prong flexing the front arm inwards while positioning the skin over the straight prong.



Step 2: Grasp front arm and position straight prong under skin. The angle of the straight prong holds the skin in place.



Step 5: If needed, reposition skin and retractor to create the desired window.



Step 3: Hold retractor with forceps by connector arm. Position right retaining loop under skin by grasping and stretching skin over retaining loop. Skin will be held in place by elevation loop.



Step 7: The final result provides a surgical window allowing for stereotaxic/brain procedures to be performed.